



Wheler Street, London, E1

BUTLER & STAG



Nestled on Wheler Street in the heart of Shoreditch, this smartly presented second-floor one-bedroom apartment offers stylish city living in one of East London's most vibrant neighbourhoods.



Leasehold

- Second Floor Apartment
- 472 Sq/Ft Internal Living Space
- Open Plan Concept Living Space
- Chain Free
- One Bedroom
- Envious Location
- Contemporary Design Throughout
- Shoreditch High Street and Liverpool Stations Close By

The property features a bright and well-proportioned reception room, complemented by a contemporary kitchen designed with both practicality and modern aesthetics in mind. The double bedroom provides a comfortable retreat, while the bathroom is finished to a clean, modern standard.

Positioned on the second floor, the apartment benefits from a pleasant outlook and an abundance of natural light, enhancing the sense of space throughout.

Ideally located, Wheler Street places you moments from the eclectic mix of cafés, restaurants, and boutiques that define Shoreditch, while also offering excellent transport links via nearby Liverpool Street and Shoreditch High Street stations, ensuring easy access across London.

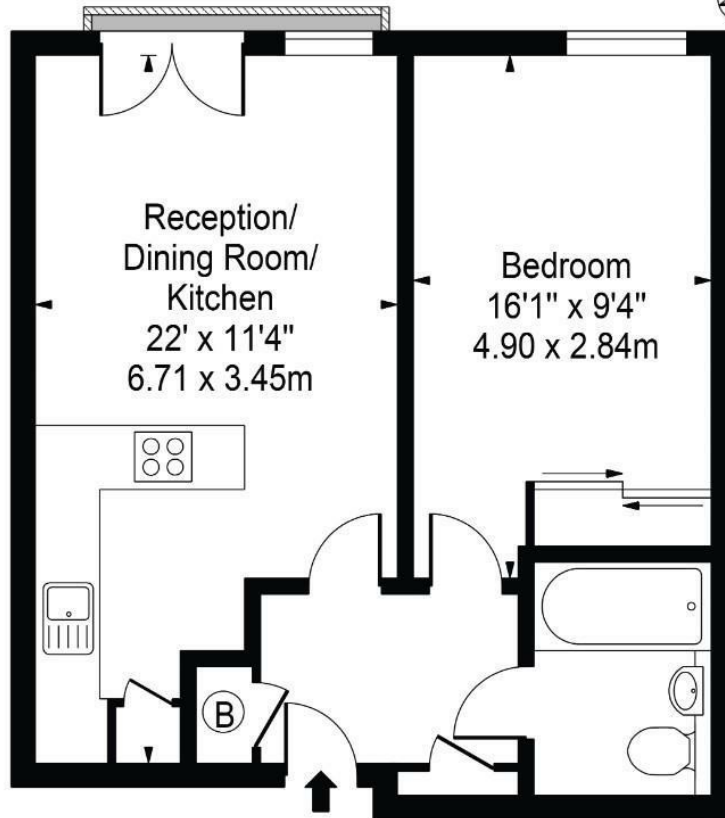
Perfect for first-time buyers, professionals, or investors, this apartment represents an excellent opportunity to secure a foothold in one of the capital's most sought-after locations.





Wheler Street

Approx. Gross Internal Area 472 Sq Ft - 43.85 Sq M



Second Floor

For Illustration Purposes Only - Not To Scale

This floor plan should be used as a general outline for guidance only and does not constitute in whole or in part an offer or contract. Any intending purchaser or lessee should satisfy themselves by inspection, searches, enquiries and full survey as to the correctness of each statement. Any areas, measurements or distances quoted are approximate and should not be used to value a property or be the basis of any sale or let.

IMPORTANT NOTICE - These particulars have been prepared in good faith and they are not intended to constitute part of an offer or contract. We have not performed a structural survey on this property and the services, appliances and specific fittings have not been tested. All photographs, measurements, floor plans and distances referred to are given as a guide and should not be relied upon.

BUTLER & STAG

☎ 020 8102 1236

🏠 508 Roman Road, Bow, London, E3 5LU

✉ bow@butlerandstag.com

www.butlerandstag.uk